

# BERRYESSA UNION SCHOOL DISTRICT SIERRAMONT MIDDLE SCHOOL TENNIS COURT IMPROVEMENT PROJECT

**PE** Pavement Engineering Inc.

You can ride on our reputation  
Corporate Office:  
3485 Sacramento Drive, Suite A  
San Luis Obispo, CA 93401  
805.781.2265

SIERRAMONT MIDDLE SCHOOL  
3155 KIMLEE DRIVE  
SAN JOSE, CA

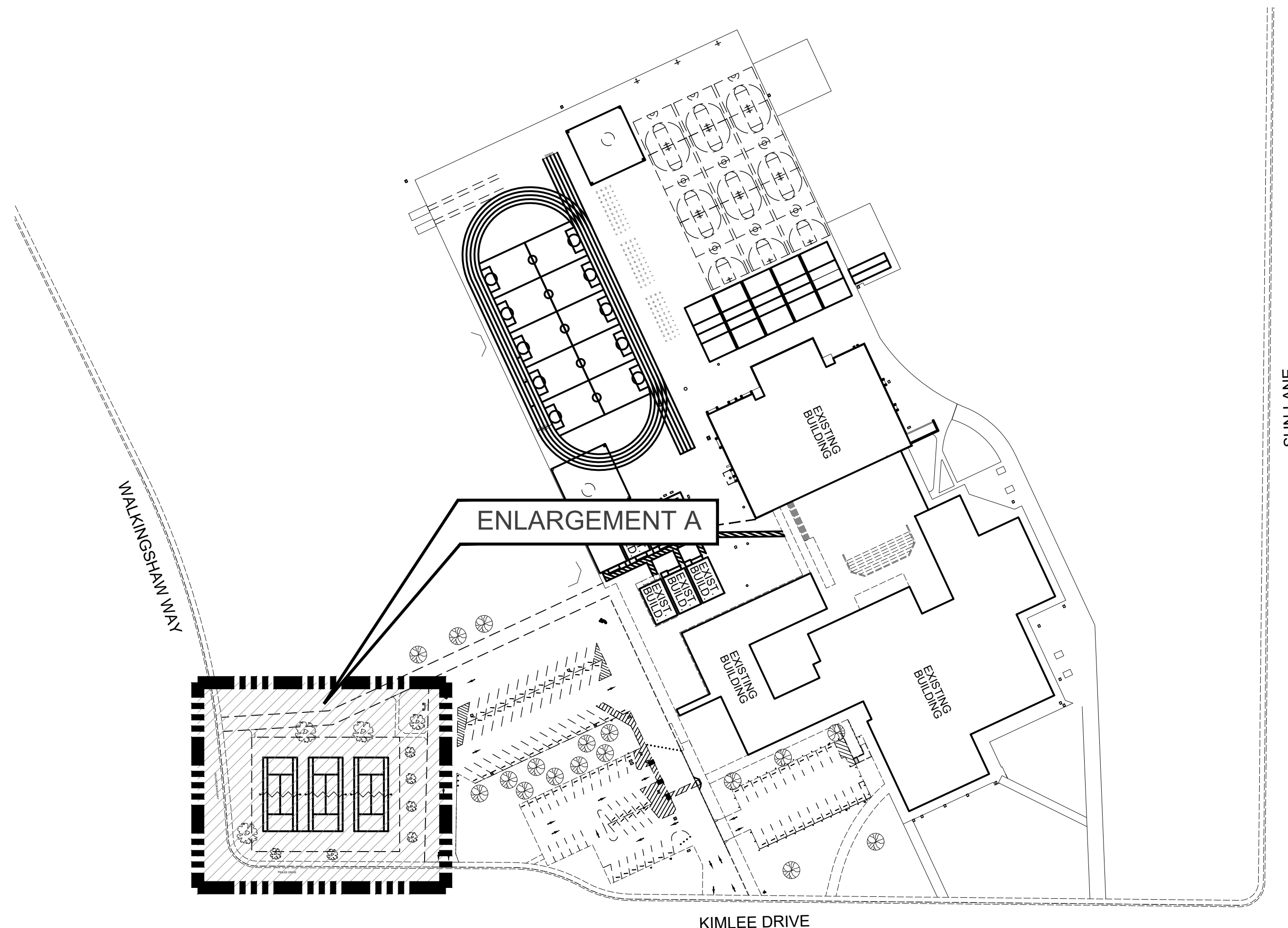
TENNIS COURT IMPROVEMENT PROJECT  
TITLE SHEET



DRAWN BY: **TLS**  
PROJECT NUMBER: **210167-01**  
SCALE: **NO SCALE**  
VERIFY SCALE  
BAR REPRESENTS  
1" ON ORIGINAL  
DATE: **JULY 2021**  
SHEET NUMBER:

**1 OF 4**

P:\11\_21\SHARED\DRIVE\ACTIVE PROJECTS\BERRYESSA USD\210167\TASK 01\DRAWINGS\SIERRAMONT TENNIS COURT.DWG, Pld Date: 9/9/2021 12:28 PM



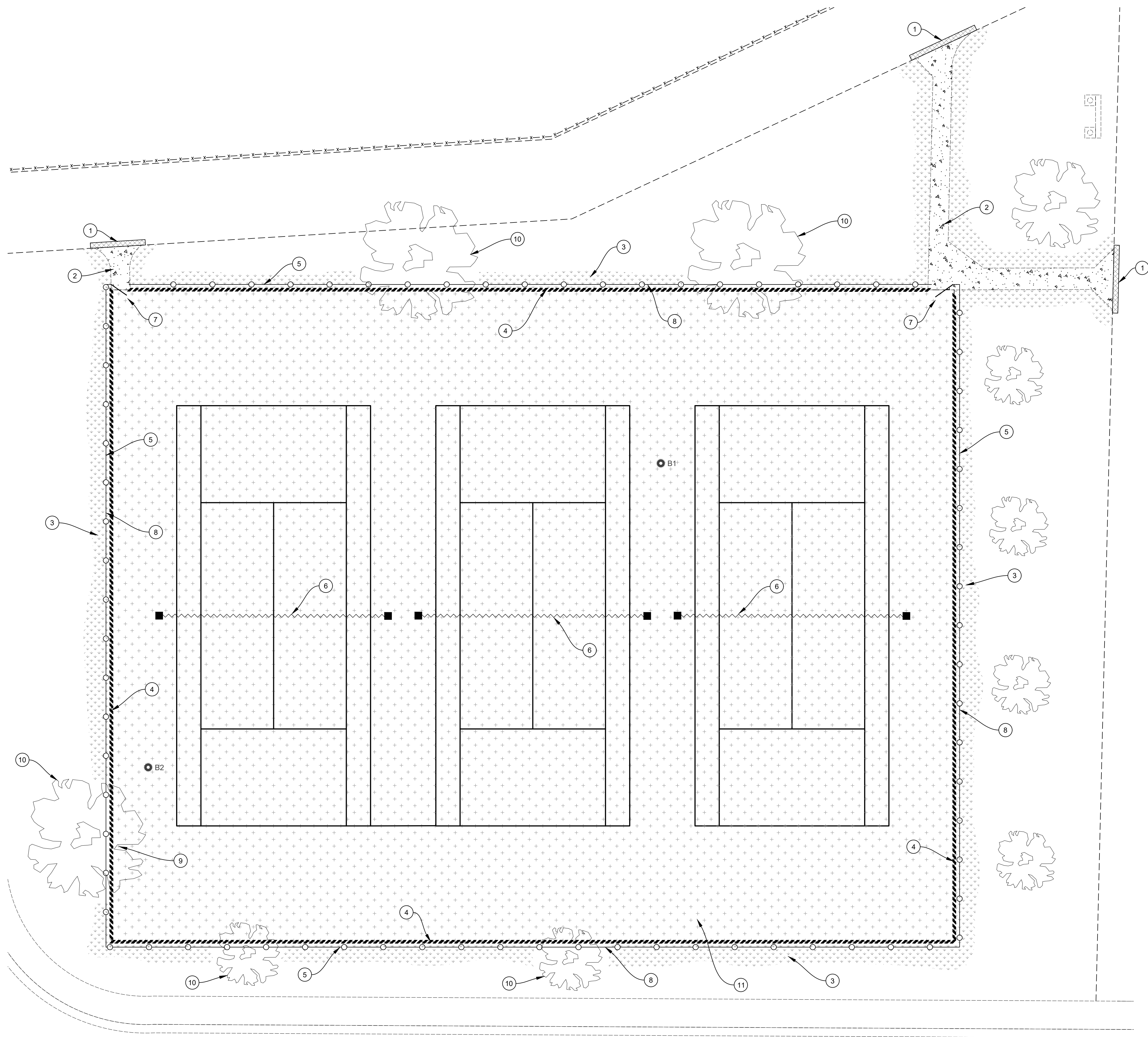
**SITE PLAN**  
NTS

SHEET INDEX	
SHEET NO.	SHEET DESCRIPTION
1	TITLE SHEET
2	ENLARGEMENT A
3	GRADING PLAN
4	DETAILS

**NOTES:**

- CONTRACTOR SHALL BE RESPONSIBLE FOR ANY AND ALL TESTING THAT MAY BE REQUIRED TO LEGALLY DISPOSE OF EXCESS MATERIAL.
- ALL WORK SHALL BE PERFORMED IN ACCORDANCE WITH THE PLANS & CONTRACT DOCUMENTS. WORK NOT COMPLYING WITH PLANS & CONTRACT DOCUMENTS WILL BE SUBJECT TO REMOVAL AND REPLACEMENT AT THE CONTRACTORS EXPENSE.
- THE CONTRACTOR SHALL REMOVE ALL CONSTRUCTION DEBRIS AND LEAVE WORK AREA CLEAN DAILY.
- ABSOLUTE ACCURACY OF DRAWING CAN NOT BE GUARANTEED. WHILE EVERY EFFORT HAS BEEN MADE TO COORDINATE THE LOCATION OF THE EXISTING EQUIPMENT, PIPING, ETC. IT IS THE RESPONSIBILITY OF THE CONTRACTOR TO COORDINATE THE EXACT REQUIREMENTS GOVERNED BY ACTUAL JOB CONDITIONS.
- PROTECT EXISTING BUILDING STRUCTURES, AND ADJACENT FINISHED SURFACES DURING CONSTRUCTION. PATCH, REPAIR AND REFINISH AREAS DAMAGED OR IMPACTED BY WORK DURING THIS PROJECT TO MATCH ADJACENT UNDISTURBED AREAS. PATCHING, REPAIRING AND REFINISHING IS TO BE PERFORMED BY WORKMEN SKILLED IN THE TRADES INVOLVED.
- CONTRACTOR SHALL HAVE LOCATING SERVICE VERIFY LOCATION OF ALL EXISTING UTILITIES PRIOR TO EXCAVATION. CONTRACTOR SHALL CONTACT THE ENGINEER TO REVIEW AND ADDRESS ANY UTILITIES CONFLICTING WITH THE SCOPE OF WORK.
- UTILITY BOXES IN CONSTRUCTION AREAS SHALL BE REUSED AND ADJUSTED TO FINISHED GRADE. IF BOXES ARE NOT REUSABLE, CONTRACTOR SHALL NOTIFY ENGINEER PRIOR TO REMOVAL.

P:\11\_21\SHARED\DR\PROJECTS\BERKESSA\USD\210167\TASK\01\DRAWINGS\SIERRAMONT TENNIS COURT.DWG Plot Date: 9/20/2021 12:28 PM



CORING LOG				
NO.	AC	AB	R-VALUE	FABRIC (Y/N)
B1	2-3/4"	7-1/4"	10	N
B2	2-1/4"	7-1/2"	---	N

\*CORING DATA IS FOR INFORMATION ONLY. EXISTING SECTION MAY VARY FROM SECTION(S) FOUND AT CORING LOCATION(S). FABRIC MAY BE PRESENT IN SECTIONS EVEN IF NOT FOUND AT CORING LOCATION(S).

**CONSTRUCTION NOTES:**

- 1 SAWCUT, REMOVE & REPLACE 4" HMA.
- 2 REMOVE & REPLACE PCC SIDEWALK.
- 3 BACKFILL HEADERBOARD & RESTORE LANDSCAPE TO ORIGINAL CONDITION.
- 4 REMOVE & REPLACE 2 X 6 REDWOOD HEADERBOARD.
- 5 REMOVE & DISPOSE OF EX. FENCING, POSTS & FOOTING; INSTALL NEW 10' HIGH BLACK POWDER COATED CHAIN LINK FENCING W/NEW GATES.
- 6 REMOVE & DISPOSE OF EXISTING TENNIS COURT HARDWARE, POST & POST BASES. INSTALL NEW PW ATHLETIC TENNIS COURT HARDWARE MODEL NO. 2205-GR (POSTS), MODEL 8352 (PREMIUM TENNIS NET), MODEL NO. 8371-20 (GROUND ANCHOR), MODEL 8371-30 (NET TIE DOWN STRAP), AND ALL OTHER MFG. REQUIRED PARTS FOR INSTALLATION. INSTALL PER MANUFACTURERS RECOMMENDATIONS.
- 7 INSTALL GATES TO MATCH EXISTING LOCATION & SIZE.
- 8 INSTALL NEW 7' HIGH WINDSCREEN.
- 9 PRUNE & REMOVE TREE ROOTS.
- 10 PROTECT EXISTING TREE & LANDSCAPE SHRUBS DURING CONSTRUCTION.
- 11 PULVERIZE EXISTING AC & AB TO A DEPTH OF 12"; REMOVE 4" OF PULVERIZED BASE; CEMENT TREAT BASE TO 8" DEPTH; PLACE 4" HMA & APPLY ACRYLIC SEAL COAT (BLUE/GREEN COLOR SCHEME).

**LEGEND**

- PULVERIZE, SOIL TREATMENT & HMA PAVING
- REMOVE & REPLACE 4" HMA
- REMOVE & REPLACE (OR) INSTALL PCC FACILITIES (SEE PLAN)
- LANDSCAPE RESTORATION
- REMOVE & REPLACE HEADERBOARD
- NEW CHAIN LINK FENCE POSTS, FABRIC & GATES
- BORE LOCATION (SEE BORING LOG)

KIMLEE DRIVE

ENLARGEMENT A  
1" = 10'



**Pavement Engineering Inc.**  
You can ride on our reputation

Corporate Office:  
3485 Sacramento Drive, Suite A  
San Luis Obispo, CA 93401  
805.781.2265

SIERRAMONT MIDDLE SCHOOL  
3155 KIMLEE DRIVE  
SAN JOSE, CA

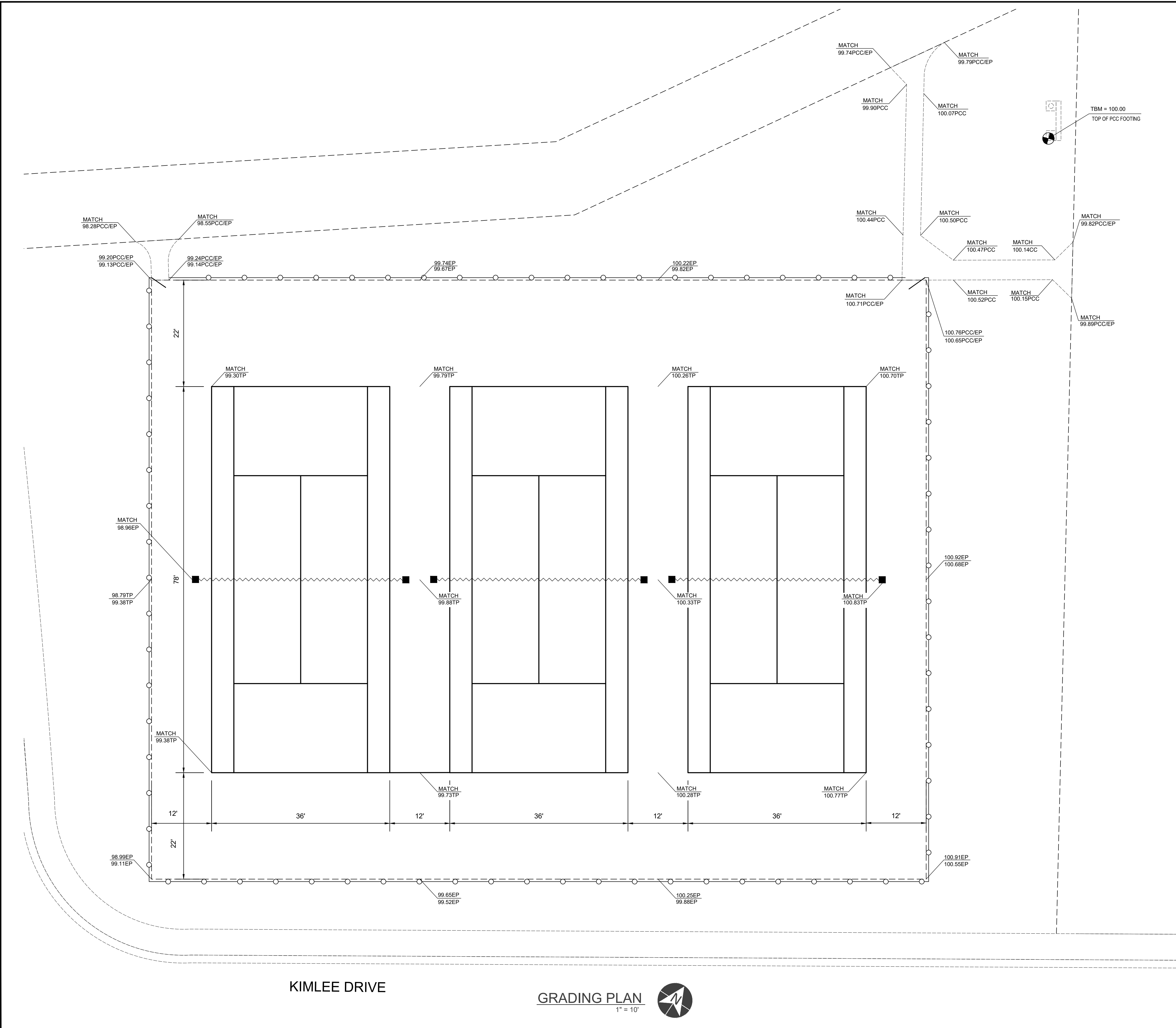
TENNIS COURT IMPROVEMENT PROJECT  
ENLARGEMENT A



DRAWN BY: **TLS**  
PROJECT NUMBER: **210167-01**  
SCALE: **1" = 10'**  
VERIFY SCALE  
BAR REPRESENTS  
1" ON ORIGINAL  
DATE: **JULY 2021**  
SHEET NUMBER:

**2 OF 4**

P:\11\_21\SHARED\DRIVEACTIVE PROJECTS\BERKESSA USD\210107\TASK 01\DRAWINGS\SIERRAMONT TENNIS COURT\TASK 01\210107-01\_SIERRAMONT TENNIS COURT.DWG, Plot Date: 9/30/2021, 12:28 PM



**LEGEND**

XX.XX XX.XX	DESIGN ELEV. EXIST. ELEV.
PCC	PORTLAND CEMENT CONCRETE
TP	TOP OF PAVEMENT
EP	EDGE OF PAVEMENT
●	TEMPORARY BENCHMARK

KIMLEE DRIVE

GRADING PLAN  
1" = 10'

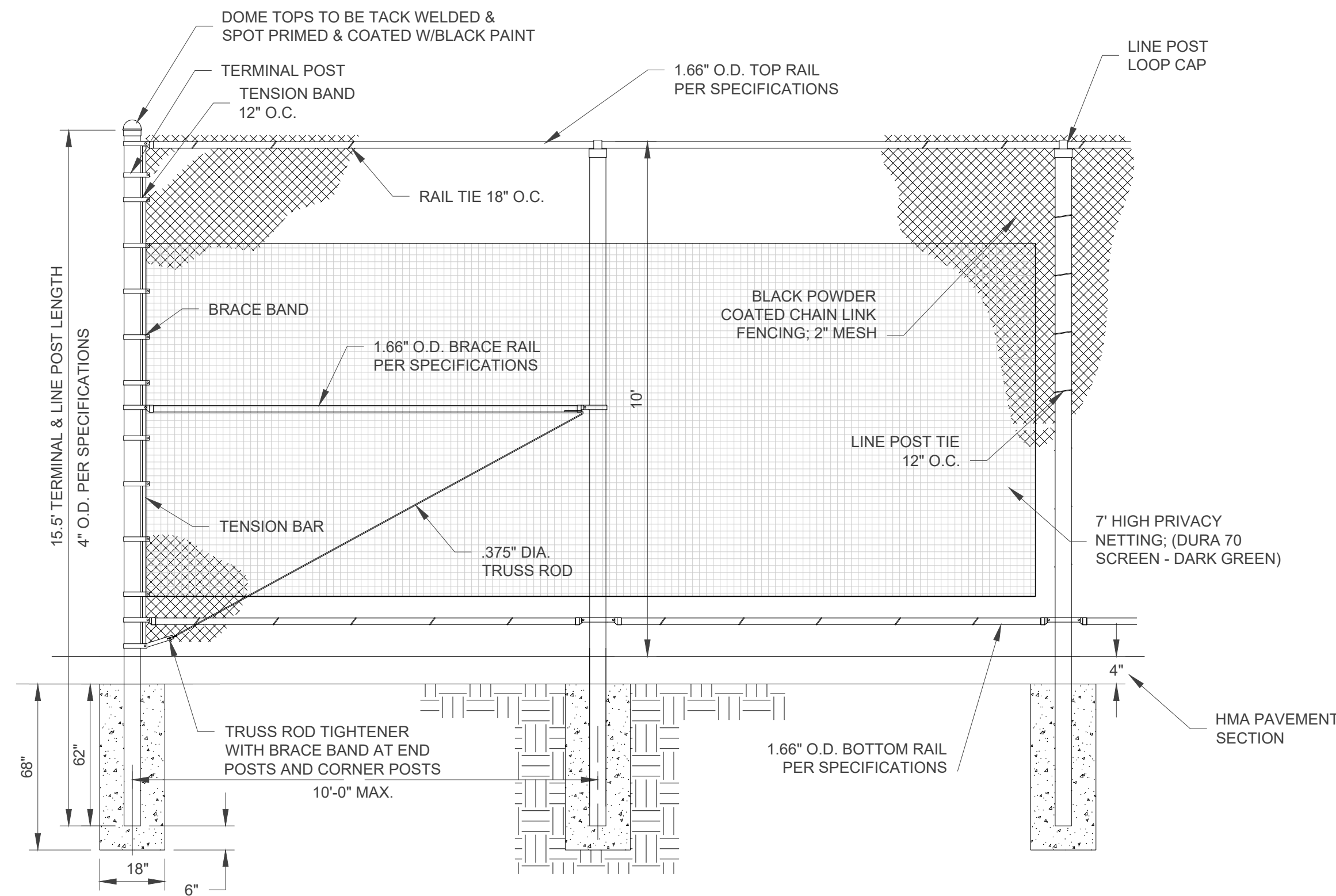


**Pavement Engineering Inc.**  
 You can ride on our reputation  
 Corporate Office:  
 3485 Sacramento Drive, Suite A  
 San Luis Obispo, CA 93401  
 805.781.2265

**SIERRAMONT MIDDLE SCHOOL**  
 3155 KIIMLEE DRIVE  
 SAN JOSE, CA  
**TENNIS COURT IMPROVEMENT PROJECT**  
**GRADING PLAN**

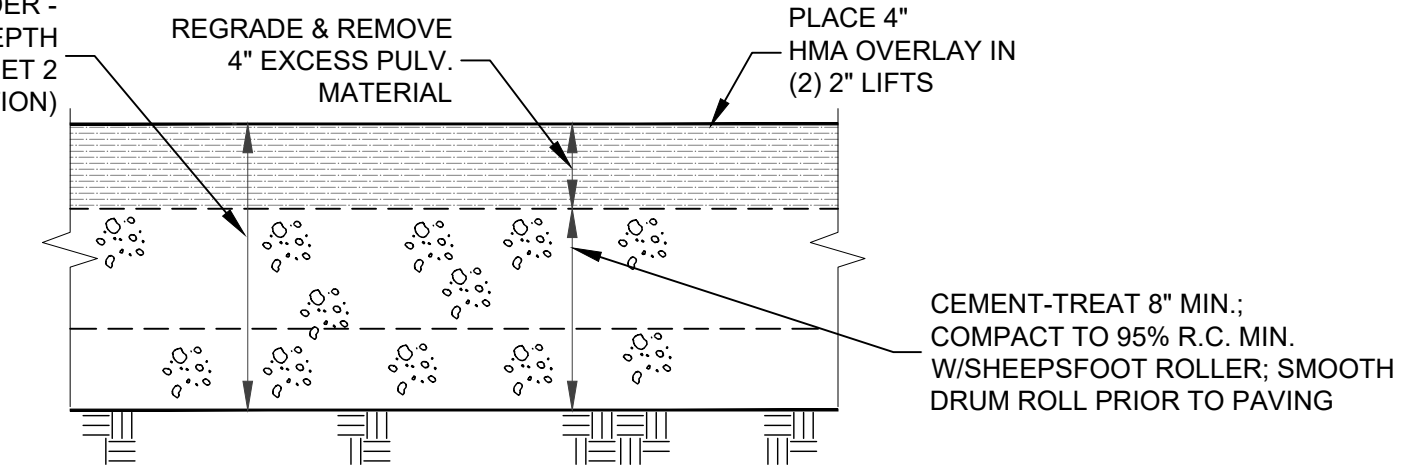


DRAWN BY:	TLS
PROJECT NUMBER:	210167-01
SCALE:	1" = 10'
VERIFY SCALE	
BAR REPRESENTS	1" ON ORIGINAL
DATE:	JULY 2021
SHEET NUMBER:	3 OF 4



CHAIN LINK FENCE DETAIL  
NTS

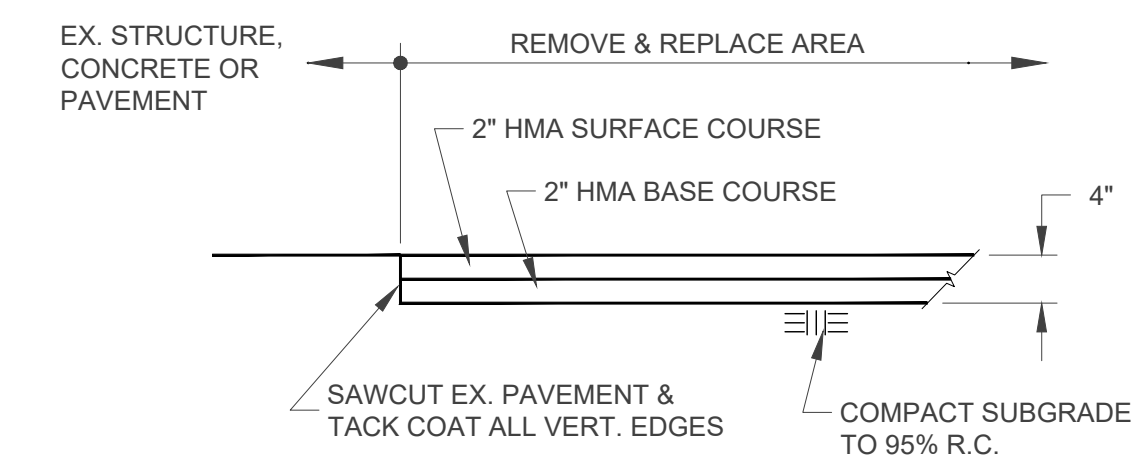
PULVERIZE EX. PAVING & UNDERLYING AGG. BASE TO 12\"/>



NOTES:

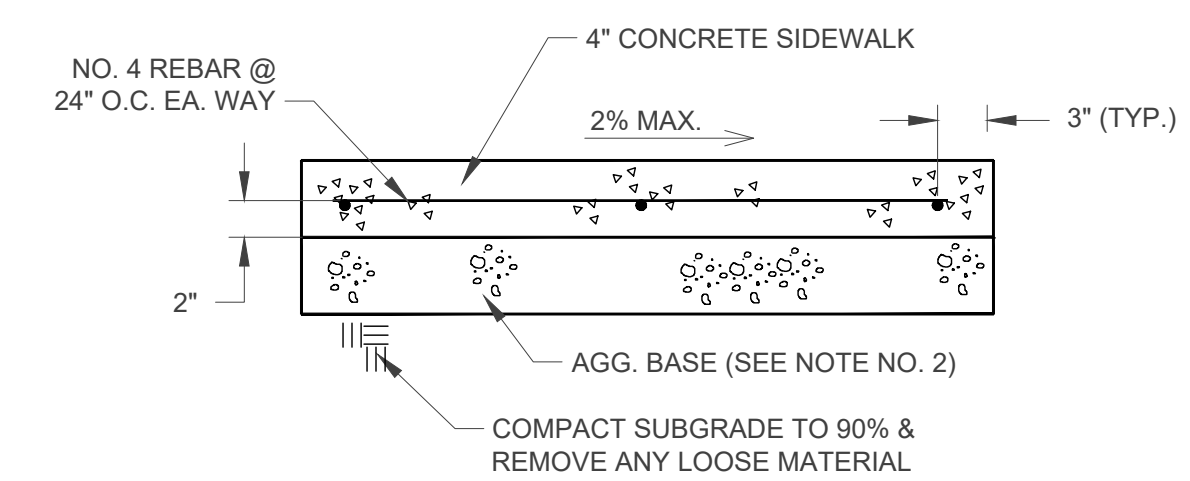
1. UNDERGROUND SERVICE ALERT (U.S.A.) SHALL BE NOTIFIED PRIOR TO ANY EXCAVATION ON THIS PROJECT. A REFERENCE NUMBER FROM U.S.A. SHALL BE PROVIDED TO CLIENT'S REPRESENTATIVE BEFORE ANY UNDERGROUND EXCAVATION WILL BE ALLOWED.
2. CONTRACTOR SHALL CONTACT BERRYESSA UNION SCHOOL DISTRICT, AND SCHEDULE WATER TO BE SHUT OFF PRIOR TO CEMENT-TREATING AND TURNED ON PRIOR TO PAVING TO AVOID PAVING OVER DAMAGED IRRIGATION LINES.
3. SEE SPECIFICATIONS FOR SOIL TREATMENT INFORMATION.

PULVERIZE 12\", REGRADE & REMOVE 4\"/>

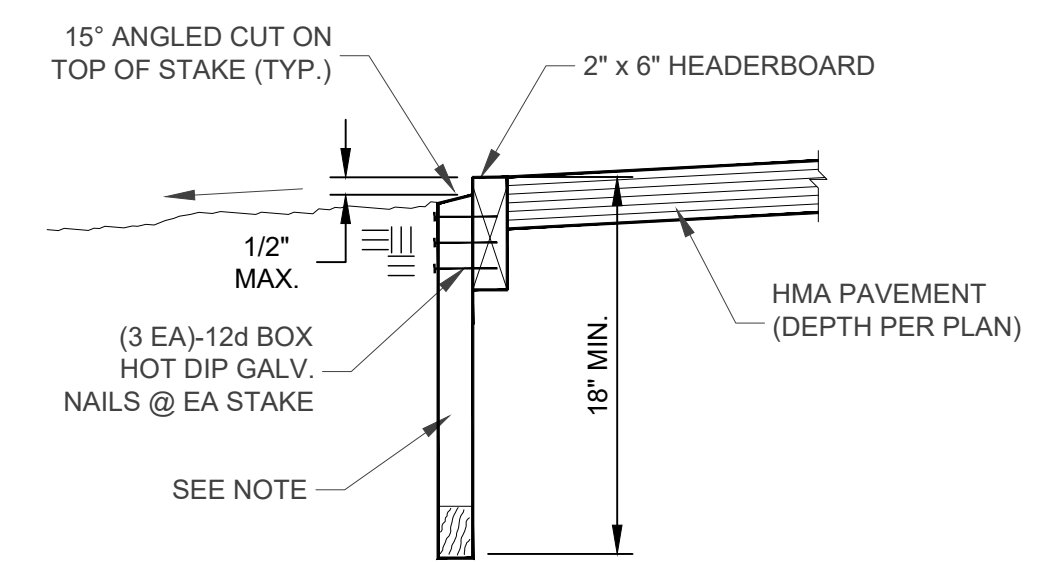


REMOVE & REPLACE 4\"/>

- NOTES
1. CONTROL JOINTS @ 10' O.C. MAX.
  2. PLACE 4\"/>



PCC SIDEWALK DETAIL  
NTS



NOTE  
2\"/>

2x6 HEADERBOARD DETAIL  
NTS

Pavement Engineering Inc.

You can ride on our reputation  
Corporate Office:  
3485 Sacramento Drive, Suite A  
San Luis Obispo, CA 93401  
805.781.2265



SAN JOSE, CA

SIERRAMONT MIDDLE SCHOOL  
3155 KIMLEE DRIVE

TENNIS COURT IMPROVEMENT PROJECT  
DETAILS



DRAWN BY: **TLS**  
PROJECT NUMBER: **210167-01**  
SCALE: **NO SCALE**  
VERIFY SCALE  
BAR REPRESENTS  
1\"/>

DATE: **JULY 2021**  
SHEET NUMBER: